

# CoolCrafting Bert & Betsy Pups

## Ingredients:

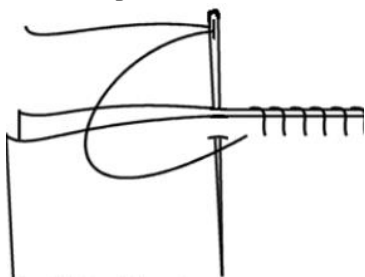
Instructions, Paper Pattern  
You will need Felt, Stuffing, Sewing Thread, Needle, 6 Pins, 2 little pockets of sand - small cliplock bags work well  
Optional trim - Ribbon, 2 Mini Dog Clips, Felt Flowers, Buttons for eyes, Buttons to decorate.

Please read through these instructions first. If you are a child, ask an adult if you are unsure.

1

## Making Up

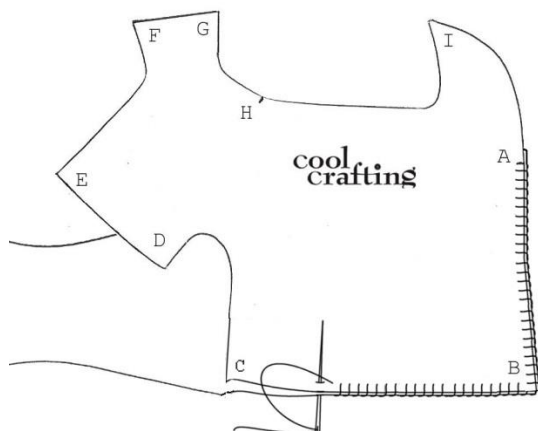
We use an over stitch (whipstitch) to sew the felt pieces together. Use single thread and make sure you sew consistently - the same distance between stitches and the same depth in from the edge.



Always start with either a knot in the fabric or a couple of small stitches in the same place.

3

Now line up the next edge and match up points C and stitch along to that point.



NB: To stitch up to point D you will need to stretch the curve of the side panel so that it matches up with the straighter edge of the body panel.

5

## Cutting Out

Press your felt and pattern with a warm iron to remove creases.

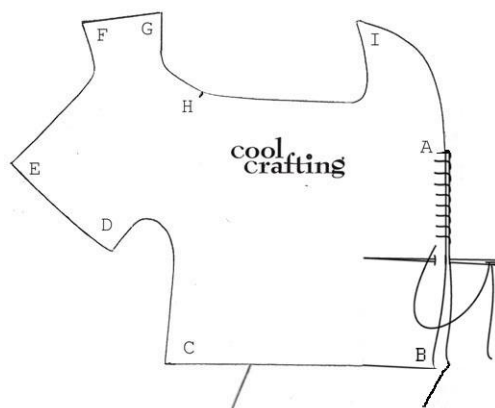
Cut around your pattern pieces carefully using scissors. Instructions are to make one pup at a time.

Pin your two pattern pieces to the felt and then cut carefully around the shapes. Mark the notches on the pattern with a **TINY** snip in the fabric. Unpin your pattern pieces from the fabric and then use the side panel again to cut out a second side panel.

Note if you have patterned felt in your kit you will need to flip the pattern piece over before you cut it out.

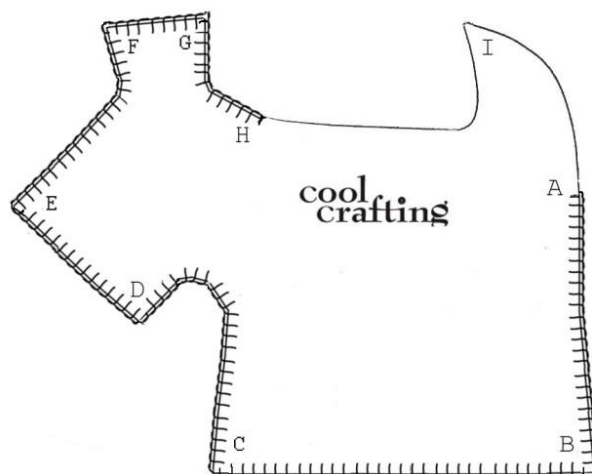
2

Take one side panel and match the small notch A with the pointed end of the body panel. Pin in place and using your needle and a matching thread stitch down to corner B.



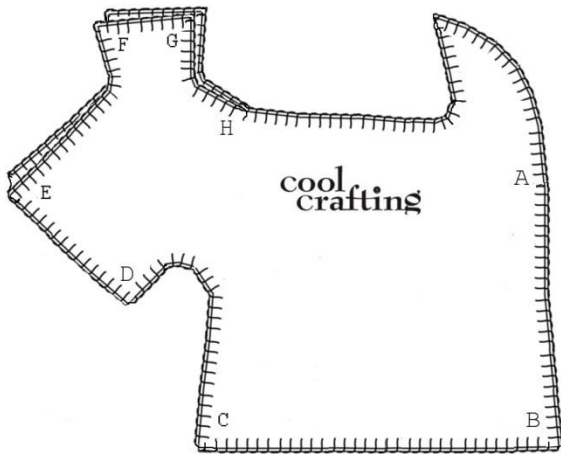
4

Continue along from point D matching up points E, F, G and finishing where point H matches the little notch or snip you have put in the side panel. Finish this stitching with a few stitches in the same place to secure



6

Now take the other side panel  
Because you need to leave a stuffing  
hole, **start from point B this time.**  
Match, pin and sew all the points  
exactly as you did for the first  
side panel. You will finish at point  
H. Do not break your thread, but now  
match up the two side panels and sew  
around to point I - the tail and  
then down to point A where you  
should secure your stitches and  
break your thread.



9

Your project should be looking pup-like  
now.

Fill your plastic bag  
with sand or rice, about  
2/3 full and close  
securely. Push the sand  
bag into the pup and  
position it so that it  
sits in the base.



Take small amounts of  
stuffing and put it into  
the pup filling the head  
up first. Make sure you  
push some into the lower jaw. Use a  
pencil to reach the hard-to- get-to bits.



Fill the head,  
ears, then the neck  
and finally the  
body. When you are  
happy that your pup  
looks right, you  
can close the hole  
with over stitching.

10

### Finishing Off

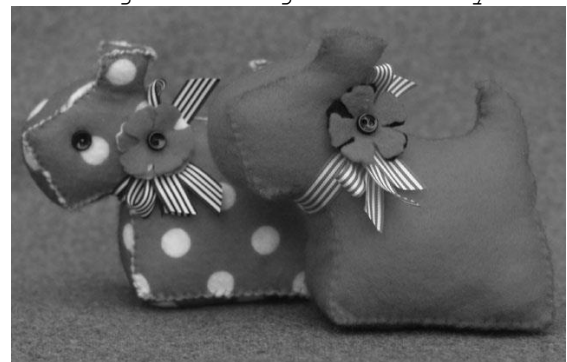
Sew on buttons for eyes if you are  
using them.

Cut your ribbon to be around 35cm,  
thread the end of the mini clip on,  
and then tie a little bow with the  
ends around the pups neck. If you  
want sew the mini felt flowers on  
top of the bow, or use buttons to  
decorate. You can use the remaining  
15cm ribbon to make a lead by  
folding, knotting the ends to make a  
loop, and clip the loop onto the  
metal clip.

Woofie Woof! You have a cute new  
friend in Bert, but he needs one too  
- so best get on with Betsy, using  
these instructions again.

11

Before you cut the pattern you could  
enlarge it on a photocopier to make a  
bigger 'grown - up' dog. Your pups can be  
filled with lavender to smell good, or  
with sand or dry beans as a paper weight.  
They can be used as pin cushions, handbag  
dangles or just things to make you smile.



Send us a picture to  
[create@coolcrafting.co.uk](mailto:create@coolcrafting.co.uk)

[www.coolcrafting.co.uk](http://www.coolcrafting.co.uk)  
copyright Sarah Peel 2012 - 2020

12